

VINTAGE HOW TO: DATING

PART ONE: SILHOUETTES

"How do I know what era an item of vintage is from?" is a common question and there are many elements to consider when dating clothing. One is silhouette and this visual timeline shows the common fashion silhouettes from the 1920s to 1980s.



BESS GEORGETTE



1920s



1930s



1940s



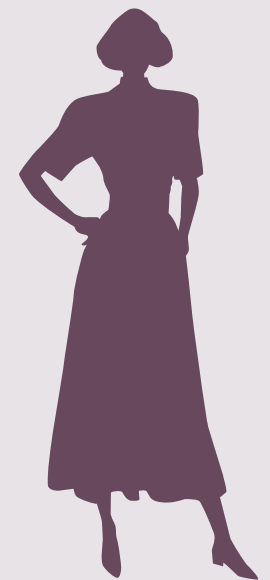
1950s



1960s



1970s



1980s